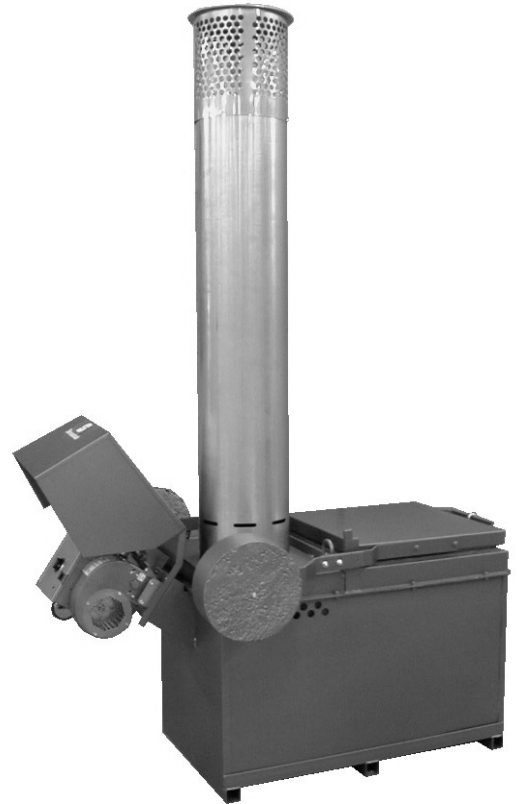




Model A200 Incineration System

Unique Design Compliant with Air Quality Regulations

- Recirculating flue gases assure clean operation.
- Built by specialists in incinerator systems.
- Designed for safe, easy operation with simple to use controls.
- Includes many benefits of high-priced systems, yet within the budgets of small facilities.
- **200 pound rated load capacity.**
- Easy to use... Set timers and walk away.
- Available with LP, Natural Gas, or Oil burners. Single burner model shown.



LOWEST OPERATING COST IN THE INDUSTRY!

*One simple solution to solid/liquid waste disposal
Immediately eliminates potential to spread diseases*

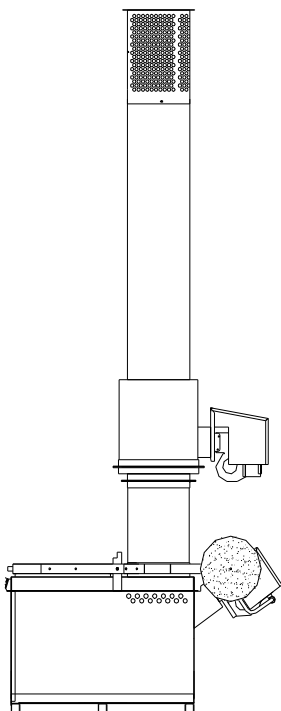
Firelake Manufacturing LLC

919 Cottontail Trail, Mt. Crawford, VA 22841

866-252-3757

www.firelakeincinerators.com

Benefits and Features of the A200 Series



- Concave refractory bottom specifically designed to insure burnout and total destruction of solid and liquid wastes.
- Secondary chamber with burner available.
- Insulated, refractory-lined chambers and stacks for durability, energy retention, and emissions control.
- High temperature refractory lined chamber walls.
- Factory assembled, aluminized steel jacket lined with high-temperature refractory.
- Factory cured chambers and stacks.
- Assembly on-site can be done with common farm equipment.
- Counter-balanced fill door.
- Manual set burn time and automatic shut off.
- Burn times are adjustable by operator to meet varying loads.
- Choice of fuels: LP, Natural Gas, or Fuel Oil.
- Stack Test Data available on many models.
- We provide permit and compliance assistance at no cost.

Specifications Summary

A200 Propane, Natural Gas, or Diesel Fired Incineration System complete with one burner, optional second burner and secondary burn chamber, stainless and / or refractory lined stack and chambers, and manual operating timers.

WASTE CHAMBER			INSTALLATION		
Chamber capacity (Type 4 waste-pathological)			200 lbs	91 kg	
Chamber volume (approximate)			6.3 cu. ft.	.18 cu. m.	
Chamber size (inside)	Width	20"	51 cm		
	Height	22"	56 cm		
	Length	36"	91 cm		
Door opening			18"W x 20"L	46 cm x 51 cm	
Height to door			33"	84 cm	
Overall dim's 1 burner, w/stack			104"H x 42"W x 65"L	2.6 m x 107 cm x 165cm	
Overall dim's 2 burner, w/stack			140"H x 42"W x 65"L	3.5m x 107 cm x 165cm	
Suggested min. slab size (l x w x thick)			8' x 6' x 4"	1.8 m x 2.4m x 10cm	
STACK			GENERAL		
Diameter	1 burner system	12" 30.5 cm,	2 burner system	14" 35.5 cm	
Material			14 gauge (2 mm) lined Aluminized Steel and/or unlined stainless steel		
REFRACTORY THICKNESS			BURNERS		
Primary	3.0"(2800F)	7.6 cm	LP or Natural or Diesel burner(s) with spark ignition and flame safety shut-off.		
Secondary	1.5"(2800F)	3.8 cm	OPERATION		
Stack	1.5"(2800F)	3.8 cm	Manual timers		
			TOTAL WEIGHT		
			900 lbs. (approximate) 408 kg		
APP. FUEL CONSUMPTION			A200 LP	A200 NATURAL GAS	A200 Diesel
Upper burner			0.83 GPH	83 CFH	0.5 GPH
Lower burner			3.0 GPH	275 CFH	2.5 GPH

* Fuel consumption approximate. Actual fuel use depends on BTU content of waste.

Firelake Mfg. LLC

919 Cottontail Trail, Mt. Crawford, VA 22841

866-252-3757

www.firelakeincinerators.com